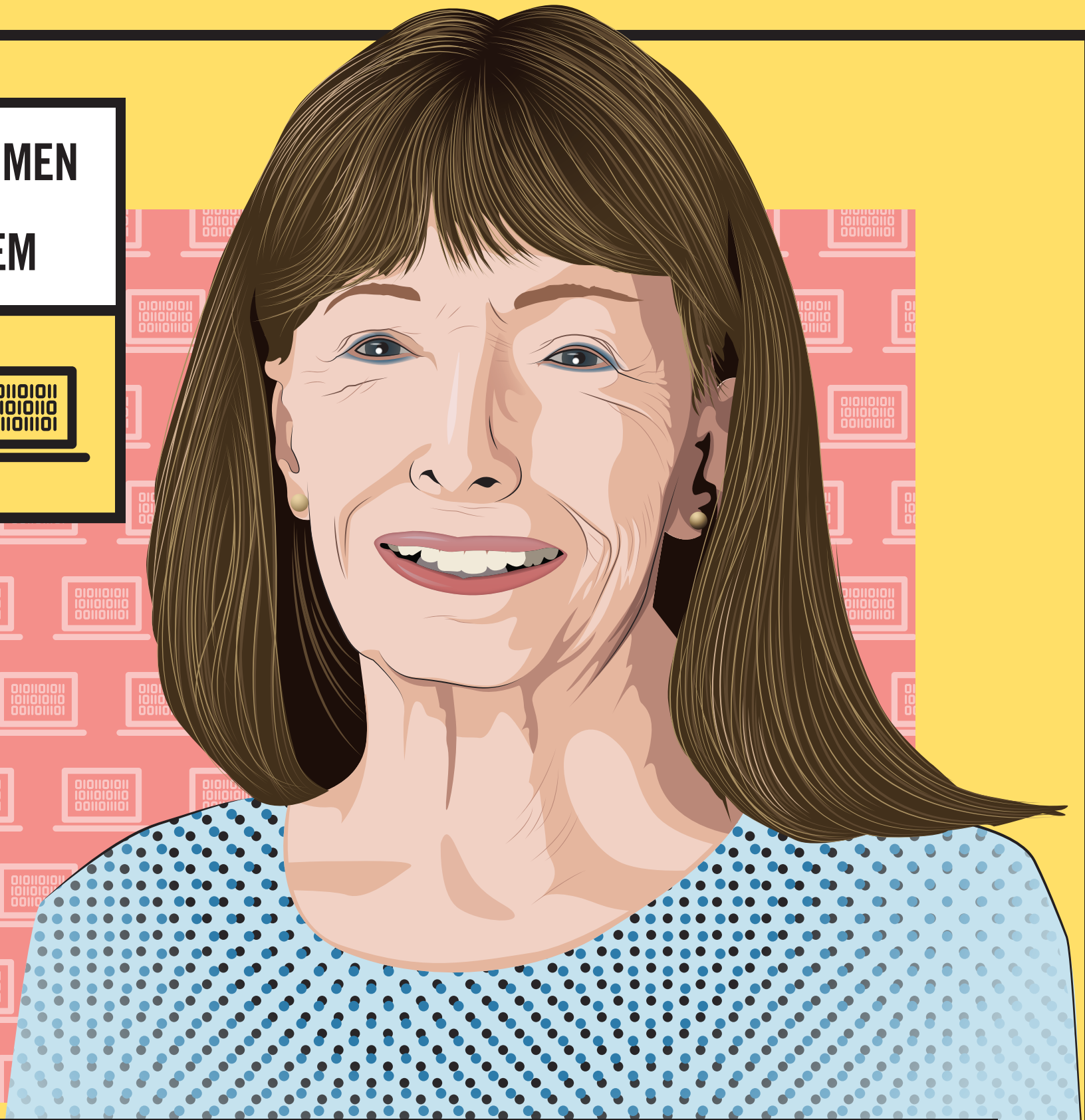


**WOMEN
IN
STEM**

01010101
10101010
00101101



LYNN CONWAY

Computer Revolutionary



Lynn Conway

Conway is a famed pioneer in micro-electronics chip design. Known as Very-Large-Scale Integration, her work in the 1970s formed the foundation of modern digital technology systems.

Ingenium is committed to encouraging and empowering women and girls in science, technology, engineering, and math. Learn more at: ingeniumcanada.org/womeninstem/