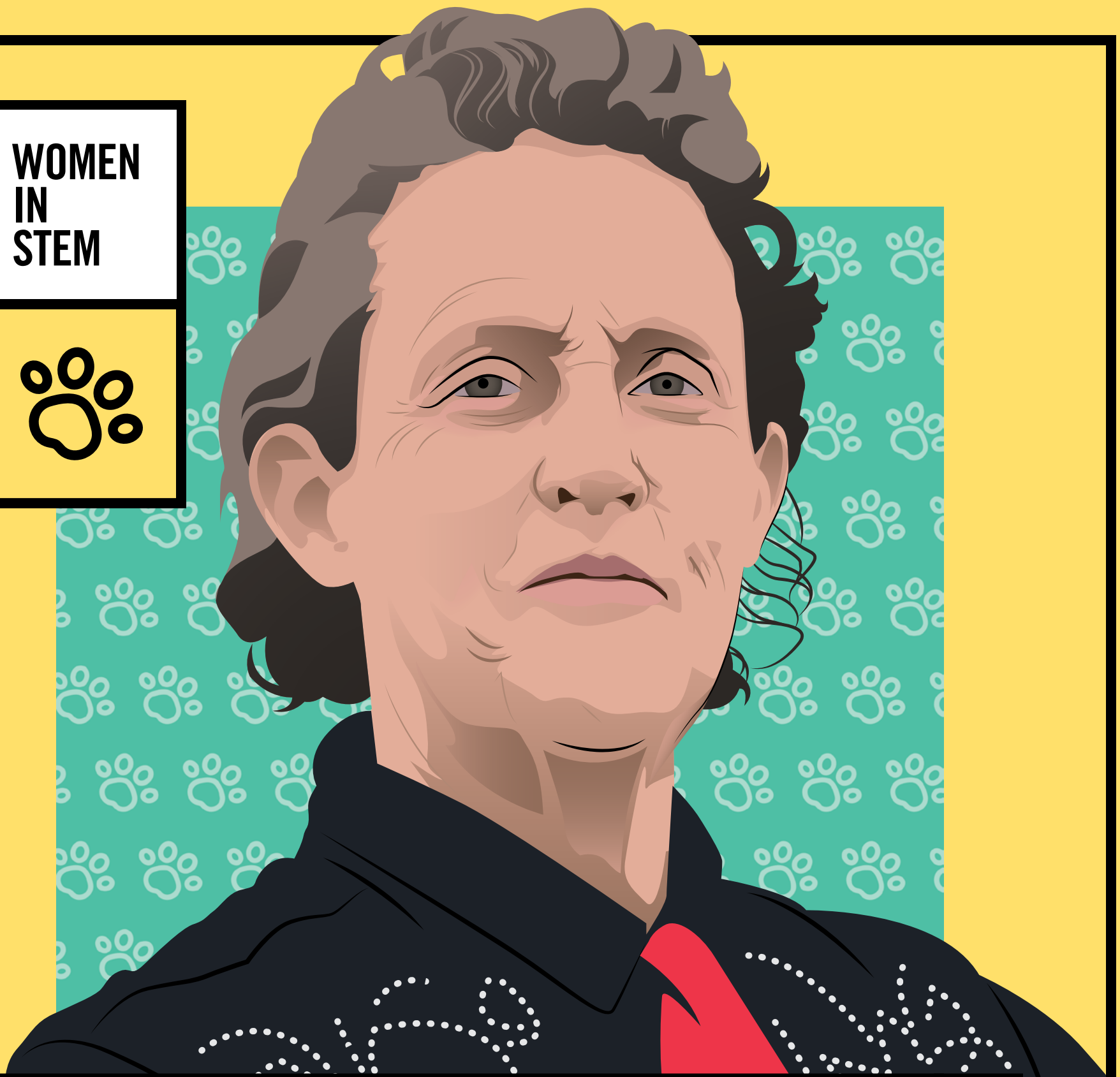


WOMEN
IN
STEM



Rosalie Windward, adaptation by nineSixteen Creative

TEMPLE GRANDIN

Empathy for Animals



Rosalie Windward

Temple Grandin used the insights gained from living with autism to become a world-renowned expert in the humane treatment of livestock. An advocate for those on the autism spectrum, she was named one of TIME's 100 people who most affected the world in 2010.

Ingenium is committed to encouraging and empowering women and girls in science, technology, engineering, and math. Learn more at: ingeniumcanada.org/womeninstem/