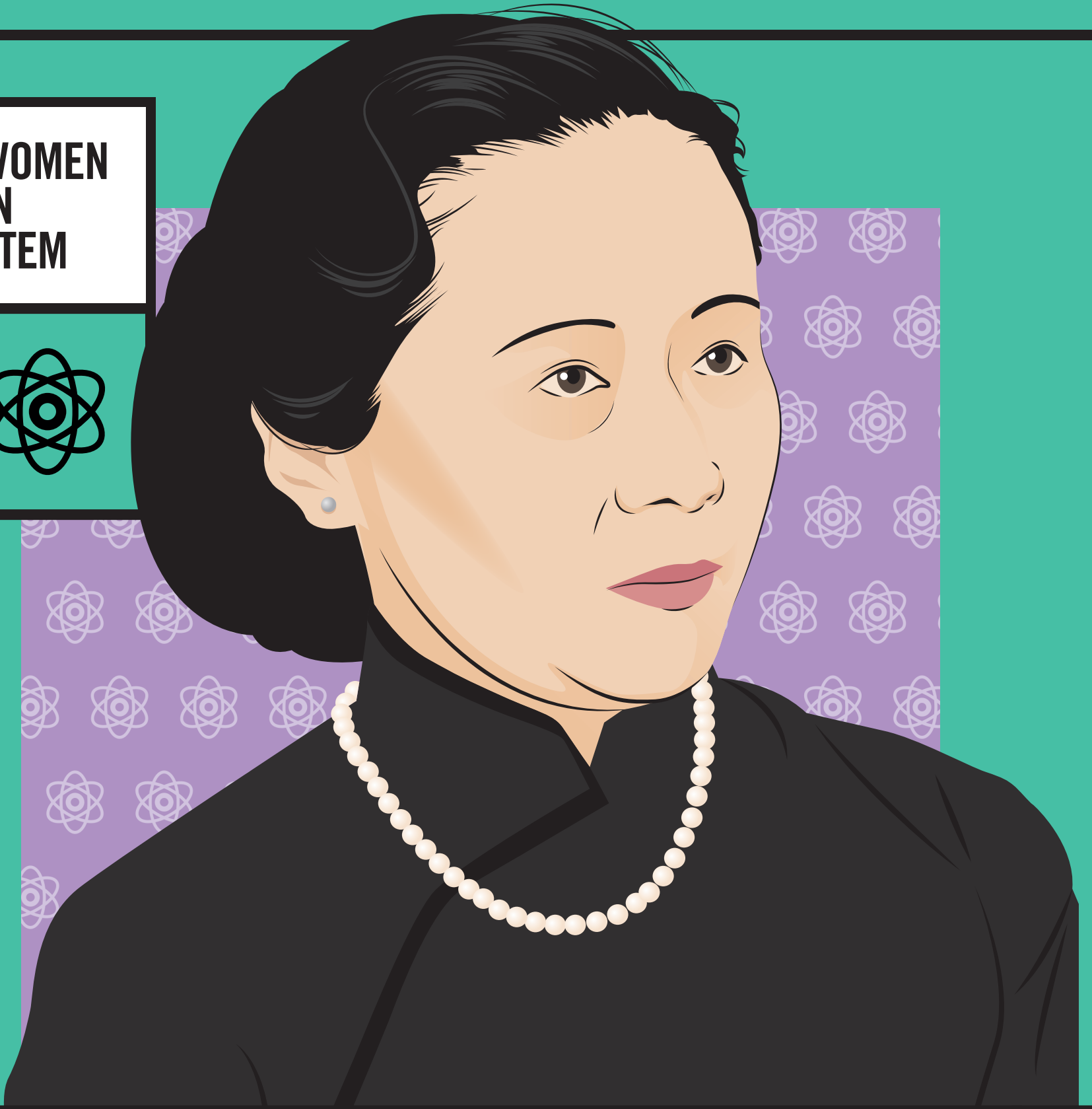
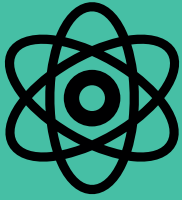


**WOMEN
IN
STEM**



Flickr Commons, adaptation by nineSixteen Creative

CHIEN-SHIUNG WU

Work that Matters



Flickr Commons

Physicist Chien-Shiung Wu made essential contributions to the Manhattan Project during the Second World War. Her innovative experiments had a huge impact on post-war nuclear physics.

Ingenium is committed to encouraging and empowering women and girls in science, technology, engineering, and math. Learn more at: ingeniumcanada.org/womeninstem/