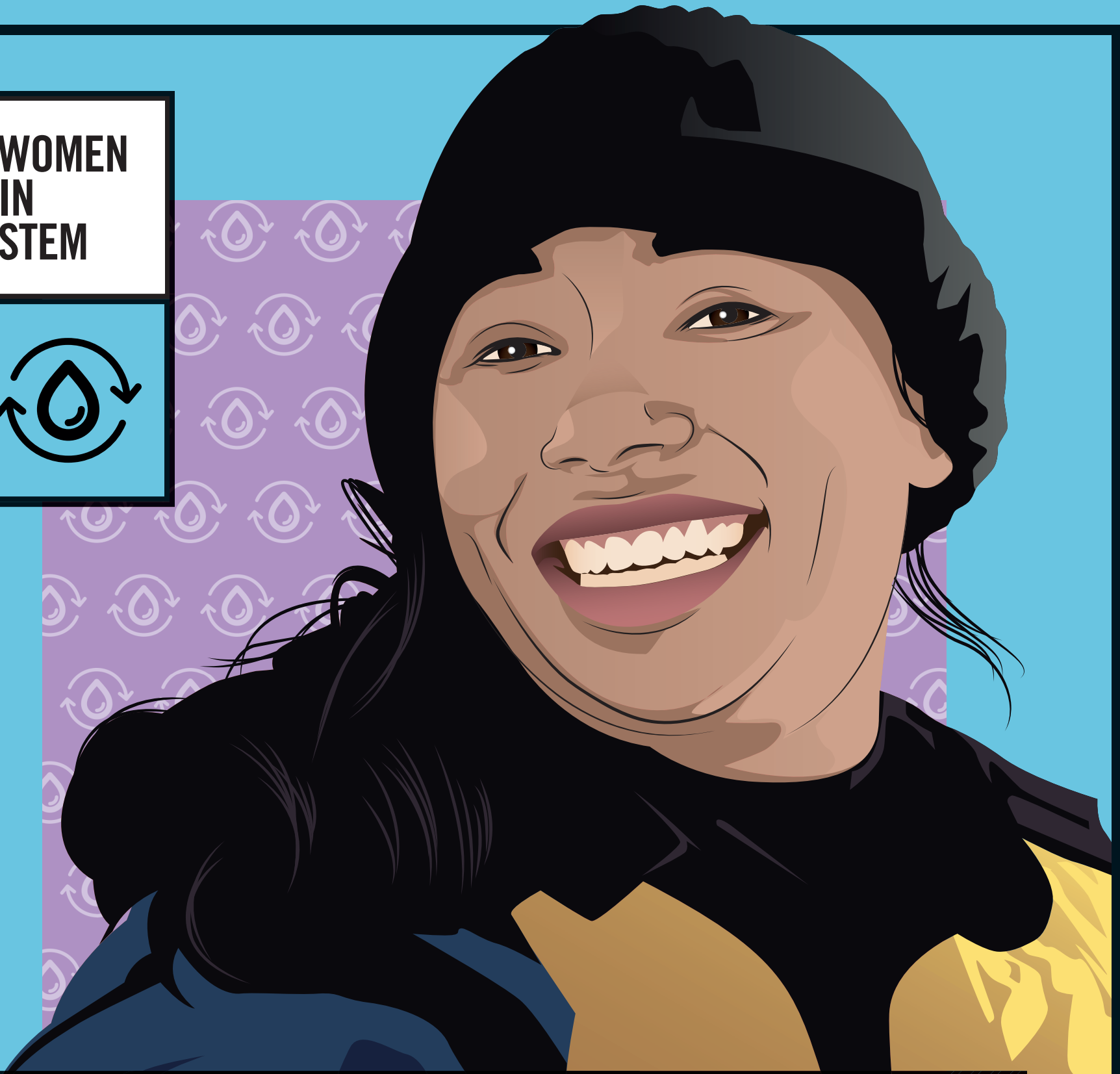
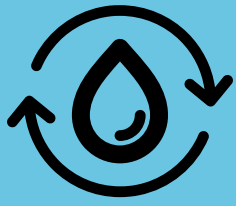


WOMEN
IN
STEM



Tyee Fellows, adaptation by nineSixteen Creative

EMILY CHOY

A Changing Arctic

Douglas Noblet



To study the effects of climate change on wildlife, Choy's research takes her to many remote locations across the Canadian Arctic. A Fellow of the Weston Foundation, she joined the expedition searching for the ships of the Franklin Expedition.

Ingenium, Department of Fisheries and Oceans and Canadian Commission for UNESCO are committed to encouraging and empowering women and girls in science, technology, engineering, and math. Learn more at: ingeniumcanada.org/womeninstem/



Fisheries and Oceans
Canada

Pêches et Océans
Canada



Canadian
Commission
for UNESCO

Ingenium

Canada