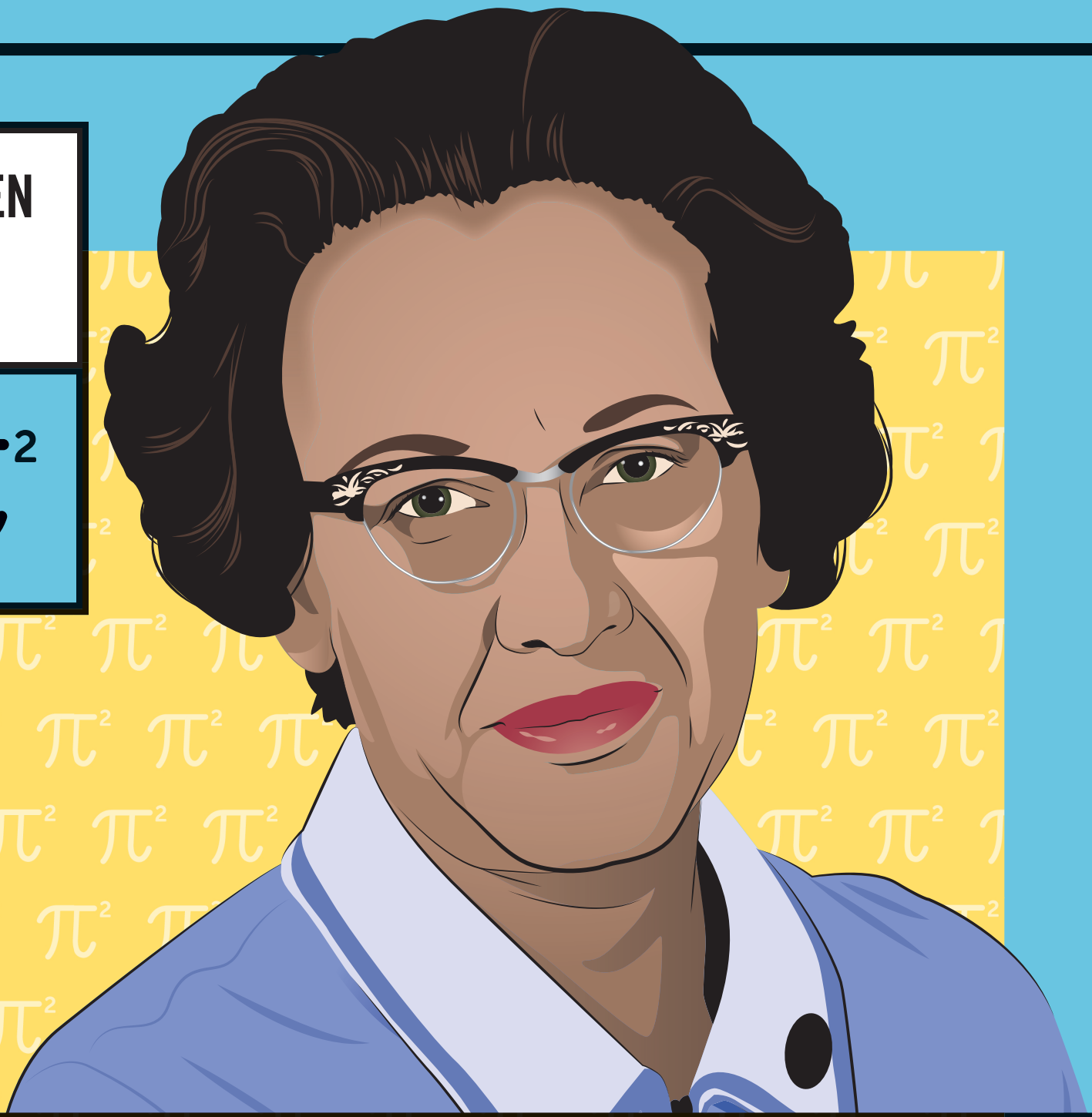


WOMEN
IN
STEM

π^2



NASA, adaptation by nineSixteen Creative

KATHERINE JOHNSON

No Limits



NASA

Overcoming barriers imposed on her for her race and gender with her incredible talents in physics and math. Johnson made important contributions to the early space program, notably calculating the flight paths of many space capsules, such as the Mercury Missions and Apollo 11.

Ingenium is committed to encouraging and empowering women and girls in science, technology, engineering, and math. Learn more at: ingeniumcanada.org/womeninstem/

Ingenium

Canada