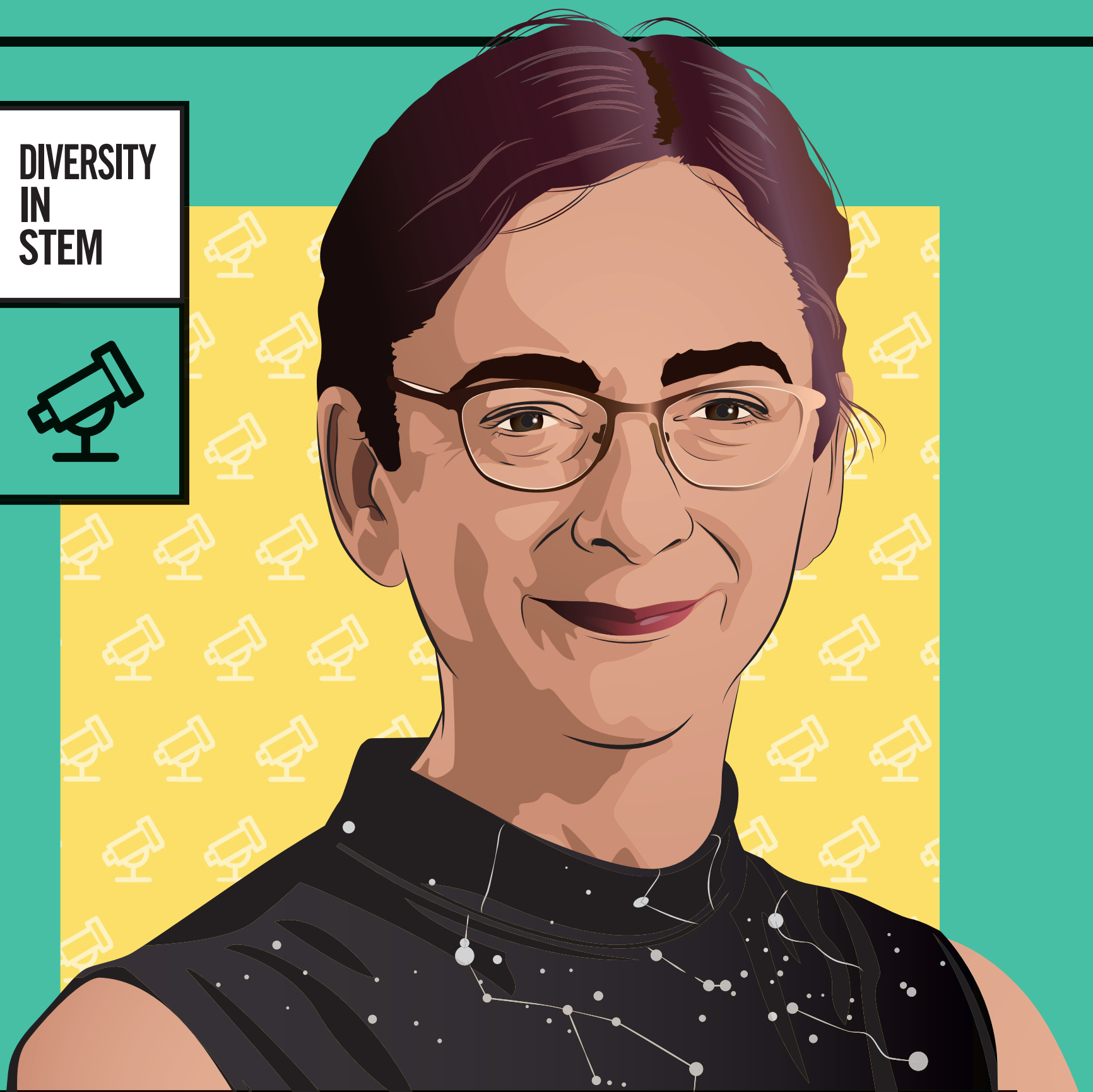


DIVERSITY
IN
STEM



University of Auckland, adaptation by ninesixteen.ca

JAN ELDRIDGE

Binary Stars, Nonbinary Advocacy

University of Auckland



Eldridge co-developed a numerical model to study the evolution of binary stars, to understand stars from our sun to stars in the most distant galaxies. Her advocacy and leadership for LGBT+ inclusion has had significant impact on students in academia.

Jan Eldridge uses the pronouns she/her.

Ingenium is committed to empowering equity-deserving groups by encouraging diversity in science, technology, engineering and math. Learn more at: ingeniumcanada.org/womeninstem/