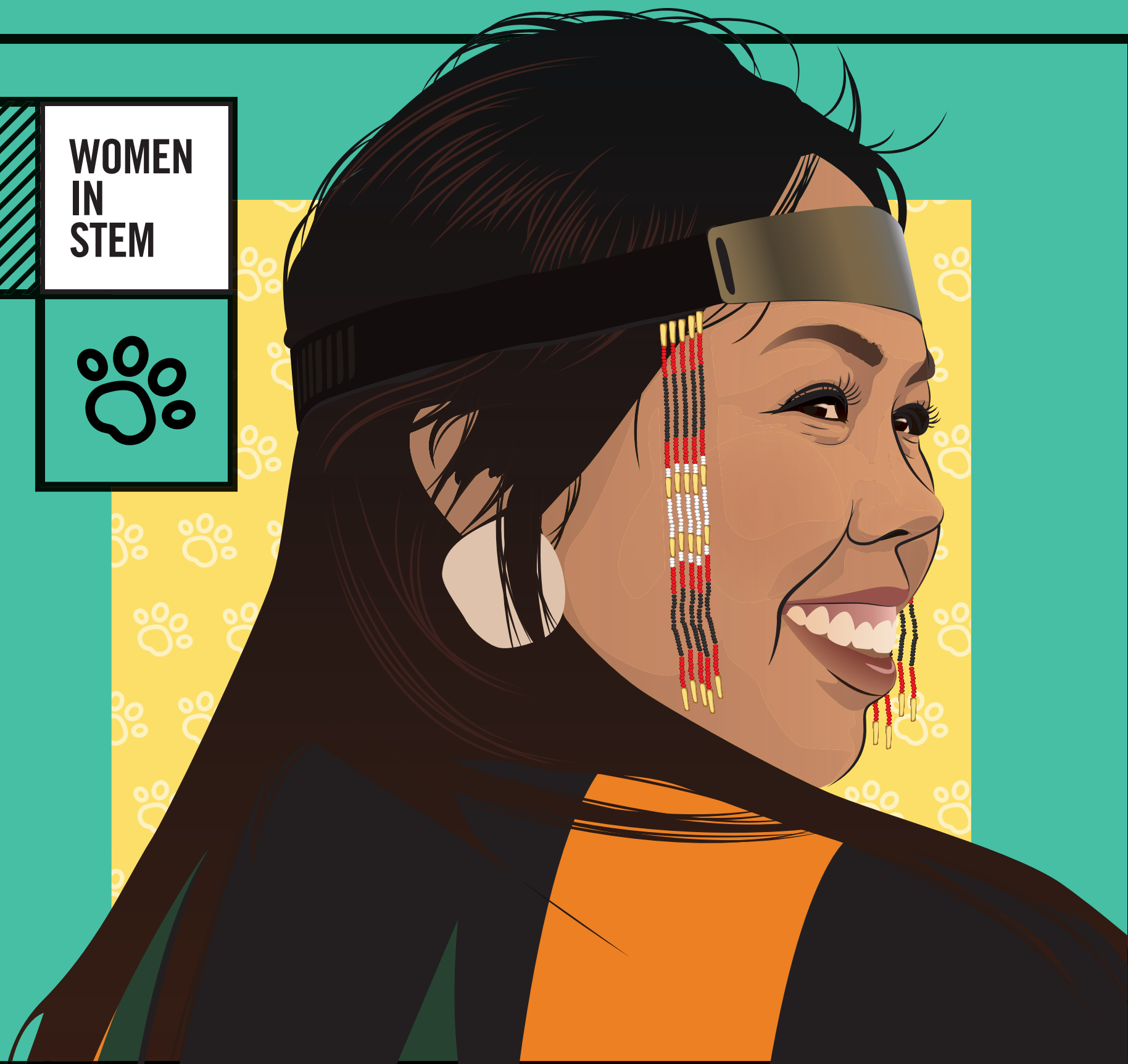


WOMEN
IN
STEM



Patricia Bourque Photography, adaptation by ninesixteen.ca



ENOOLYAAQ SUDLOVENICK

Animals in a Changing Arctic



Richard Hann

By combining Western research methods, Inuit values and Inuvialuit knowledge, Sudlovenick tracks animal health and environmental observations in the Arctic. The animals she studies are both indicators of environmental health and important cultural resources for northern communities.

Ingenium is committed to encouraging and empowering women and girls in science, technology, engineering, and math. Learn more at: ingeniumcanada.org/womeninstem/